



£725,000

Nut Ash Lane, Headley, Epsom



- Charming Period Cottage
- Kitchen and separate utility room with ample space to modernise
- Double Garage with space for two cars
- Three Bedrooms
- Large Family bathroom
- Potential to extend subject to ST PP
- Potential to extend subject to ST PP
- Two Reception rooms with Feature fireplace and log burner
- Large South facing front garden as well as rear and side garden space.
- Located in the beautiful village of Headley

Nut Ash Lane, Headley, Epsom, KT18

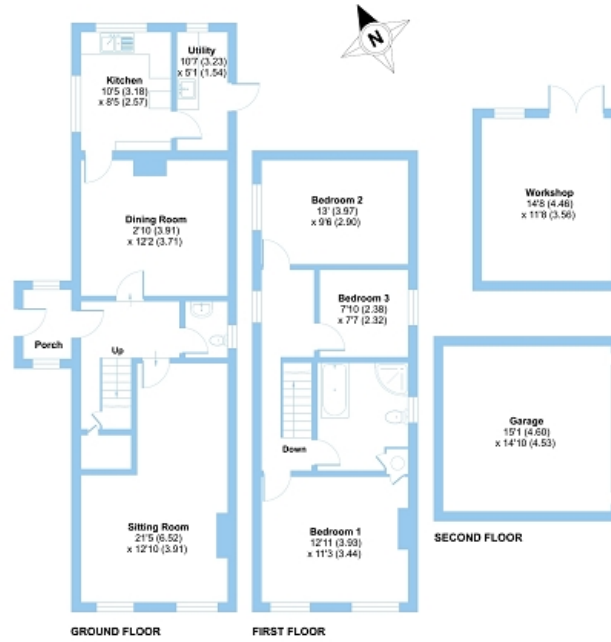
Approximate Area = 1224 sq ft / 113.7 sq m

Garage = 224 sq ft / 20.8 sq m

Outbuilding = 171 sq ft / 15.8 sq m

Total = 1619 sq ft / 150.3 sq m

For identification only - Not to scale



Floor plan produced in accordance with RICS Property Measurement 2nd Edition, incorporating International Property Measurement Standards (IPMS Residential). © midwest 2023. Produced for Johnson's Independent Property Agents. REF: 1200733

Open Day Saturday 31st May by Appointment Only Johnson's are pleased to offer to the market this secluded, 3-bedroom period cottage located within the beautiful village of Headley. Though in need of modernisation, this property has a lot of developmental opportunities. Viewings are highly recommended to truly appreciate the space and potential to extend that this property boasts (ST PP).

